

# FOR SALE AND DONATION LIST

Center for Independent Living of Western Wisconsin

Updated April 29, 2024

## FOR SALE

### Accessible Van

**Chrysler Pacific, 2021.** Excellent condition. Braun wheelchair conversion. Side Entry. Hand controls. A lock system. Mileage 19,500. Asking \$49,500. Contact Linda @715.645.0324

**[2012 Dodge Grand Caravan] [\$28,000] [Located in Germantown, Wisconsin]**  
Contact: Philip Meinzen 262.707.4493

- 72,300 Miles-Well cared for-Excellent Condition-Great Value
- New tires; New brakes and rotors
- Side entry Ramp/with auto Lift
- Two removable front seats - also has EZ Loc, with electronic cradle and pin installed for wheelchair front sitting.
- Clean interior-well preserved exterior-clean underbody



### Shower Accessories

**Shower transfer slider bench. Asking \$40.** Only used 4 times.  
Contact Steve @ 715.832.1747

## HOSPITAL BED

**Almost new Hospital Bed-all electric.** Sheets and incontinence pads included. Paid \$1,900. Asking \$1,100. Will need to be picked up. Contact Bev @ 715.273.5629

**Hospital bed with remote – Invacare model.** Asking for \$200.  
Contact Alyssa @605.690.6195



## POWER WHEELCHAIR

**Pride Electric Wheel Chair.** New. Asking \$3,000. Contact Linda@ 715.645.0324

**2 Jazzy models power wheelchair.** One is in good condition – will need a seat. It raises and lowers. Asking \$2,500 OBO. Second wheelchair shows signs of wear and tear. It needs an armrest. Asking \$750 OBO. Both are in good running condition.  
Contact Alyssa @605.690.6195



## **2023 (Power Wheelchair) Pride Mobility Quantum Q6 Edge 2: 1 Level.**

Reclines, elevates, 300# weight limit. Only used 3 weeks. Paid \$10,000. Asking \$1,500.  
Contact JoAnne @520.682.7375

### **STAIR LIFT**

**Pinnacle chair lift system by Harmar.** Asking \$500. Contact Cyndi @715.456.4333

- 350 lb weight capacity
- Has 2 remotes
- Chair swivels when stationary.
- Interchangeable arms
- Interchangeable side to side.
- Footrest
- LED indicator light
- Many safety features, seat belt.
- Chair charges at top and bottom of stairs.
- Used on a straight flight of stairs with 12 steps. Stair angle 32-52 degrees. Approximately 14 feet long.





## **ALL FROM ONE SELLER**

Contact Glenn @715.866.8383

**Quantum Edge 2 wheelchair** 8 years old tilt only (needs batteries) make offer.

**Invacare Storm TDX 5 wheelchair** with tilt only needs batteries make offer.

**Massage table** \$100.

**Roho cushions** for wheel chairs.

**Rifton Supine Stander E430** \$900.



**Quantum Edge 3 wheelchair (with Roho cushion)** 3 years old new batteries tilt and height adjustment \$1500.



**Jouse joystick** for alternative cursor control and access for computers and mobile devices \$500.



**ALL FROM ONE SELLER**

Contact Glenn @715.866.8383

**Rolling commode** (rolls into shower) Numotion \$400.



**Hospital bed with pressure mattress** \$1700. NEVER USED.



**ALL FROM ONE SELLER**

**Journey UP Independence Bed**, Twin XL multi-position that rotates to standing position, like a lift chair. Brand new, never been slept in. \$1,800.00.

Contact Becky @ 715.239.1486



**Standing Rolator.** Upright type with little use. \$50.00

Contact Becky @ 715.239.1486



### **WALKERS**

**Standard aluminum walker.** 4 or 5 walkers. Asking \$10 each.

**Stand up walker (like the upright rollator).** Asking \$100.

Contact Don @ 715.829.0613

**For information on the items on this list, please contact the person listed directly. To get on or be removed from this list please contact Deb at CILWW @ 800.228.3287 or 715.233.1070 extension 202.**

*CILWW does not warrant the condition or terms of the sale of any device or equipment offered for reutilization by any seller or buyer. CILWW is not liable for claims, liabilities, damages, losses, costs, expenses, maintenance and penalties arising from items being purchased or sold. It shall be the responsibility of the seller or donator to provide accurate and detailed information about the device and equipment specifications and condition to buyer. CILWW functions solely on sharing the information with other parties.*

# DONATIONS

## ALL FROM ONE PERSON

(2) Manual wheel chairs with pedals

(2) Standard Walkers with tennis balls

(2) 4-Wheeled walkers with seat and storage areas

(2) shower chairs. One is a transfer bench where 2 of the legs sit outside the tub. The second has wheels so go into a shower with a seat with a hole in it.

(2) Hoyer lifts. Manual. One has cloth slings. The other is for use the shower. There are a variety of slings available.

Contact Tom @ 715.563.0297

## FROM PERSONAL ASSISTANT SERVICES (LOCATED AT CILWW)

- 3 wheelchairs
- 2 (4-wheeled) walkers with a seat
- a standard walker
- crutches
- a bedside table
- a shampoo tray
- 2 slide boards
- 4 pronged walker.

*CILWW waiver will need to be signed before donation.  
If you are interested in any equipment under this section,  
please contact Samantha @ 715.233.1070*

## STAIR LIFT

**It is a straight lift for 10 stairs**, then it makes a 180 degree turn to the left for the last 4 steps. Contact Terrance @ 715.235.0079

## WHEELCHAIRS/WHEELCHAIR ACCESSORIES



**Child-size wheelchair.** The chair seems to be in good shape, but needs a good cleaning. The contact is Rebecca P. @608.716.7160, Access to Independence in Madison. Please note she does not work on Mondays. The chair is located in Madison at their office.

**Manual wheelchair** small size. Contact Ervin @715.492.3445

**Manual wheelchair with back up brake system.** When the person stands up the brake engages. When the person sits down the brake releases. This provides an extra safety feature. It has the normal brakes too. Contact William@ 952.270.5481

**Interior wheel chair lift for van.** Hydraulics make the lift swing out to the side of the van and lower the ramp (with assist). Contact Rodney @ 715.222.9390

**ALL FROM ONE DONOR**

**Arms that attach to a toilet**

**Shower chair**

**Walker-standard**

Carol @715.808.2129

**ALL FROM ONE DONOR**

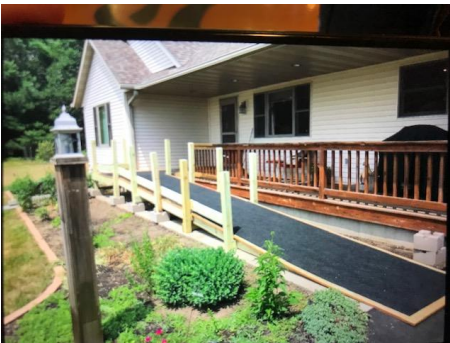
**Upright walker**

**4-wheeled walker** with seat

**Bike-looking seat** on a steel frame-seat is able to move.

Contact John @ 651.770.5283 (please call late afternoon or evening).

**WOODEN RAMP**



**Wooden ramp made with treated lumber.** Four feet wide by sixty feet long. Includes wood landing pad with rails and skid strips. It will need to be disassembled. It was built so it could be easily disassembled. Contact Marty @ 715.232.8166. If he does not answer, please leave a message and he will return the call.

**For information on the items on this list, please contact the person listed directly. To get on or be removed from this list please contact Deb at CILWW @ 800.228.3287 or 715.233.1070 extension 202.**

*CILWW does not warrant the condition or terms of the sale of any device or equipment offered for reutilization by any seller or buyer. CILWW is not liable for claims, liabilities, damages, losses, costs, expenses, maintenance and penalties arising from items being purchased or sold. It shall be the responsibility of the seller or donator to provide accurate and detailed information about the device and equipment specifications and condition to buyer. CILWW functions solely on sharing the information with other parties.*